

# Gyptone® Tile Quattro 50

DEMOUNTABLE AND  
ACOUSTIC TILE WITH  
SQUARE PERFORATION

ACTIV  
air

## Characteristics



**Activ'Air:** Gyptone Activ'Air is designed to decompose formaldehyde emissions from emitting building materials, paint, furniture, carpets etc., into non harmful inert compounds. Gyptone Activ'Air ceilings can reduce formaldehyde concentrations with up to 70%\*.



**Sustainability:** Gyptone acoustic ceilings are made of gypsum and carton. The carton is produced from recycled cardboard and paper. The used gypsum consists of natural gypsum in combination with recycled gypsum collected from construction sites and recycling centers.



**Dimensional stability:** Gyptone tiles should be installed and used in areas with a relative humidity not exceeding 70% for prolonged periods or temperature exceeding 45° C.



**Installation:** Gyptone tiles is suitable for all standard exposed and concealed grid systems. See Gyptone Tile installation manual for further details.



**Construction height:** The smallest possible standard construction height is as follows:  
Edge A + E15 (exposed grid) = 120 mm.  
Edge B (concealed grid) = 45 mm.  
Edge D2 (concealed grid) = 195 mm.  
For smaller construction heights contact your local SG Company.



**Surface:** Gyptone Quattro 50 is supplied pre-painted in edge A, E15 and D2. The paint used is white color NCS 0500. Gyptone Quattro 50 with edge B is supplied unpainted. Final painting of the edge B tile is done on the building site.



**Maintenance:** Repainting must be done with a short-haired roller. The tiles must not be spray-painted, as this impairs sound absorption.



**Cleaning:** Gyptone tiles can be cleaned with a damp cloth. Most standard cleaning agents can be used.

*\* The effectiveness of the Activ'Air technology has been tested by the accredited Eurofins laboratory. The tests show that a Gyptone ceiling with Activ'Air reduces up to 70% of the formaldehyde in a controlled test environment.*

## Product description

The Gyptone acoustic ceiling range is designed to improve a room's acoustic environment with optimized reverberation time and improved speech intelligibility in a given room, like in schools, kindergartens, offices, retail and the health sector. All Gyptone products are with the Activ'Air technology that will improve the indoor air quality by reducing the formaldehyde level.

The Gyptone tile range includes 8 different perforation designs: Line 4, Sixto 60, Point 11-12, Quattro 20-22-50-70 and Base 31 without perforation and acoustic performance, all with the edges A, B, D2 or E15.

Gyptone acoustic ceilings have durable and low maintenance surfaces with long lifespan and minimal maintenance costs. Gyptone acoustic ceilings are made from natural materials and contain no harmful substances.

A big part of Gyptone products are made of recycled gypsum and have some very strong sustainability properties. Used Gyptone products can be completely recycled in the production of new gypsum products.

# Gyptone® Tile Quattro 50

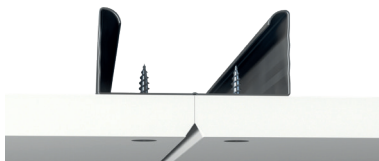
## Edge A:

Exposed T-15 grid, Exposed T-24 grid  
Demountable/Prepainted



## Edge B:

Timber battens, Primary/secondary system, GK(CD)-system  
Not demountable. Unpainted



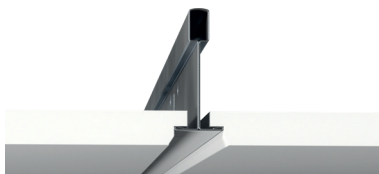
## Edge D2:

Concealed T-24 grid  
Demountable/Prepainted

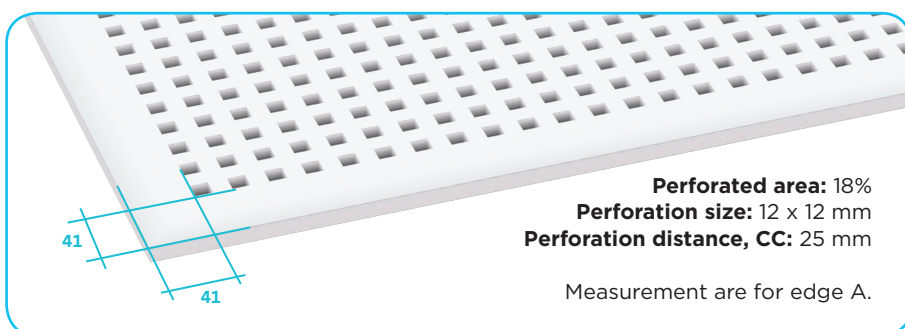


## Edge E15:

Exposed, recessed T-15 grid  
Demountable/Prepainted

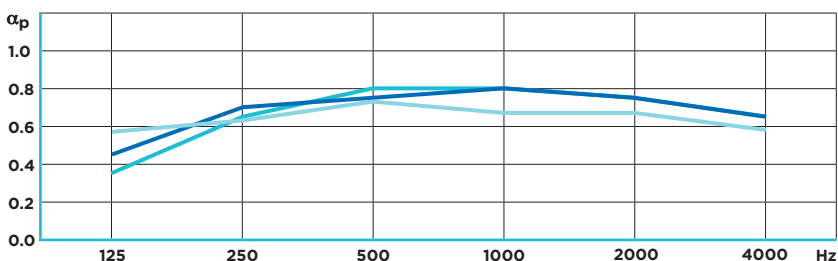


Technical data	Value			
Edge	A	B	D2	E15
Modular size, mm	600 x 600	600 x 600	600 x 600	600 x 600
Actual size, mm	594 x 594	600 x 600	600 x 600	592 x 592
Thickness, mm	10	12.5	12.5	10
Weight	7 kg/m <sup>2</sup>	8 kg/m <sup>2</sup>	8 kg/m <sup>2</sup>	7 kg/m <sup>2</sup>
Colour	White (NCS 0500)			
Gloss Value	5-9 (Reference standard: ISO 2813)			
Light reflection	70%			
Fire performance	A2-s1, d0 (Reference standard: EN 14190)			



## Acoustics

Practical absorption coefficient  $\alpha_p$



Suspension distance	Mineral Wool	Frequency						$\alpha_w$ value	NRC value	Absorption class
		125 Hz	250 Hz	500 Hz	1 kHz	2 kHz	4 kHz			
58 mm	45 mm	0.35	0.65	0.80	0.80	0.75	0.65	0.80	0.75	B
200 mm	-	0.57	0.63	0.73	0.67	0.67	0.58	0.70	0.70	C
300 mm	70 mm	0.45	0.70	0.75	0.80	0.75	0.65	0.75	0.75	C

## Acoustic properties:

The acoustic measurements meet the requirements of ISO 354. The construction height specifies the distance between the undersides of the suspended ceiling and the existing floor/ceiling construction. The sound absorption is affected by construction height and by any mineral wool installed behind them.

**SAINT-GOBAIN**

Saint-Gobain Denmark A/S

Gyproc, Hareskovvej 12  
4400 Kalundborg, Denmark  
Tel. : +45 5957 0330  
Fax: +45 5957 0331  
[www.gyptone.com](http://www.gyptone.com)



\*Information sur le niveau d'émission de substances volatiles dans l'air intérieur, présentant un risque de toxicité par inhalation, sur une échelle de classe allant de A+ (très faibles émissions) à C (fortes émissions)



Gyptone acoustic products are tested by Danish Indoor Climate Labelling and according to the French Health and Environmental Authority's labelling scheme. Used acoustic ceiling products can be fully recycled into the production of new gypsum products.