

Gyptone® Point 12

DEMOUNTABLE AND
ACOUSTIC TILE WITH
ROUND PERFORATION

ACTIV
air

Characteristics

ACTIV
air

Activ'Air: Gyptone Activ'Air is designed to decompose formaldehyde emissions from emitting building materials, paint, furniture, carpets etc., into non harmful inert compounds. Gyptone Activ'Air ceilings can reduce formaldehyde concentrations with up to 70%*.



Sustainability: Gyptone acoustic ceilings are made of gypsum and carton. The carton is produced from recycled cardboard and paper. The used gypsum consists of natural gypsum in combination with recycled gypsum collected from construction sites and recycling centers.



Dimensional stability: Gyptone tiles should be installed and used in areas with a relative humidity not exceeding 70% for prolonged periods or temperature exceeding 45° C.



Installation: Gyptone tiles is suitable for all standard exposed and concealed grid systems. See Gyptone Tile installation manual for further details.



Construction height: The smallest possible standard construction height is as follows:
Edge A + E15 (exposed grid) = 120 mm.
Edge B (concealed grid) = 45 mm.
Edge D2 (concealed grid) = 195 mm.
For smaller construction heights contact your local SG Company.



Surface: Gyptone Point 12 is supplied pre-painted in edge A, E15 and D2. The paint used is white color NCS 0500. Gyptone Point 12 with edge B is supplied unpainted. Final painting of the edge B tile is done on the building site.



Maintenance: Repainting must be done with a short-haired roller. The tiles must not be spray-painted, as this impairs sound absorption.



Cleaning: Gyptone tiles can be cleaned with a damp cloth. Most standard cleaning agents can be used.

** The effectiveness of the Activ'Air technology has been tested by the accredited Eurofins laboratory. The tests show that a Gyptone ceiling with Activ'Air reduces up to 70% of the formaldehyde in a controlled test environment.*

Product description

The Gyptone acoustic ceiling range is designed to improve room acoustics environment with optimized reverberation time and improved speech intelligibility in a given room, like schools, kindergartens, offices, retail and the health sector. Product with the Activ'Air technology will also improve the indoor air quality, by reducing the formaldehyde level.

The Gyptone tile range includes 4 different perforation designs: Line, Sixto, Point, Quattro and Base without perforation and without acoustic performance, all with edge A, B, D2 or E15.

Gyptone acoustic tiles are durable and have a strong surface which is easy to clean and maintain. The result is that a Gyptone tile will last for a lifetime.

A big part of a Gyptone tiles are made of recycled gypsum and have some very strong sustainability properties. Used Gyptone tiles can be completely recycled in the production of new gypsum products.

Gyptone® Tile Point 12

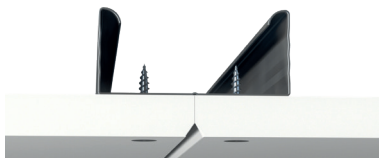
Edge A:

Exposed T-15 grid, Exposed T-24 grid
Demountable/Prepainted



Edge B:

Timber battens, Primary/secondary system, GK(CD)-system
Not demountable. Unpainted



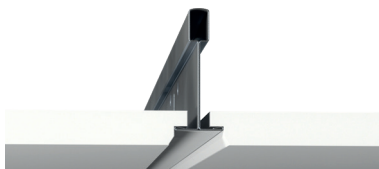
Edge D2:

Concealed T-24 grid
Demountable/Prepainted

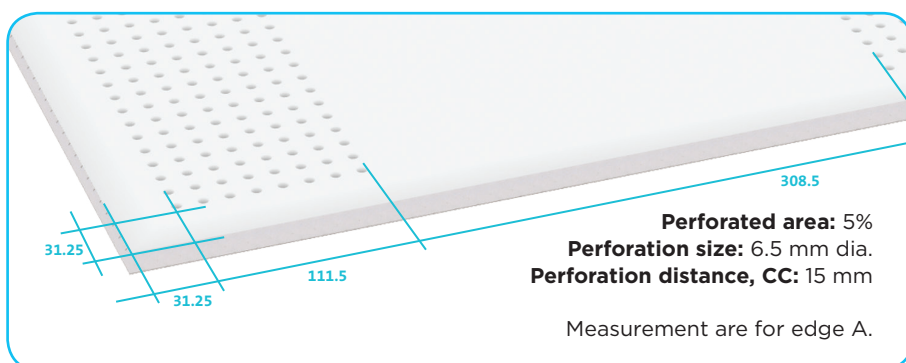


Edge E15:

Exposed, recessed T-15 grid
Demountable/Prepainted

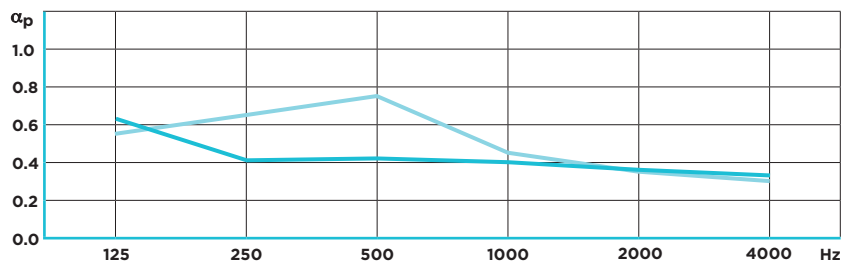


| Technical data | Value | | | |
|------------------|--|---------------------|---------------------|---------------------|
| Edge | A | B | D2 | E15 |
| Modular size, mm | 600 x 600 | 600 x 600 | 600 x 600 | 600 x 600 |
| Actual size, mm | 594 x 594 | 600 x 600 | 600 x 600 | 592 x 592 |
| Thickness, mm | 10 | 12.5 | 12.5 | 10 |
| Weight | 7 kg/m ² | 8 kg/m ² | 8 kg/m ² | 7 kg/m ² |
| Colour | White (NCS 0500) | | | |
| Gloss Value | 5-9 (Reference standard: ISO 2813) | | | |
| Light reflection | 70% | | | |
| Fire performance | A2-s1, d0 (Reference standard: EN 14190) | | | |



Acoustics

Practical absorption coefficient α_p



| Suspension distance | Mineral Wool | Frequency | | | | | | | α_w value | NRC value | Absorption class |
|---------------------|--------------|-----------|--------|--------|-------|-------|-------|------|------------------|-----------|------------------|
| | | 125 Hz | 250 Hz | 500 Hz | 1 kHz | 2 kHz | 4 kHz | | | | |
| 58 mm | 50 mm | 0.63 | 0.41 | 0.42 | 0.40 | 0.36 | 0.33 | 0.40 | 0.40 | D | |
| 200 mm | - | 0.55 | 0.65 | 0.75 | 0.45 | 0.35 | 0.30 | 0.40 | 0.55 | D | |

Acoustic properties:

The acoustic measurements meet the requirements of ISO 354. The construction height specifies the distance between the undersides of the suspended ceiling and the existing floor/ceiling construction. The sound absorption is affected by construction height and by any mineral wool installed behind them.

SAINT-GOBAIN

Saint-Gobain Denmark A/S

Gyproc, Hareskovvej 12
4400 Kalundborg, Denmark
Tel. : +45 5957 0330
Fax: +45 5957 0331
www.gyptone.com



*Information sur le niveau d'émission de substances volatiles dans l'air intérieur, présentant un risque de toxicité par inhalation, sur une échelle de classe allant de A+ (très faibles émissions) à C (fortes émissions)



Gyptone acoustic products are tested by Danish Indoor Climate Labelling and according to the French Health and Environmental Authority's labelling scheme. Used acoustic ceiling products can be fully recycled into the production of new gypsum products.